

Dealer Update

STEERING | BRAKES | SUSPENSION

EDITION THIRTEEN

Your Frequently Asked Questions

Have a burning question for us? Email the dealer team!

CAN I PLACE MY ORDER OVER THE PHONE?

We prefer receiving purchase orders in writing, but you can call our tech line to verify fitment and part numbers. They will encourage you to send in an email or fax to ensure that we process your order promptly and correctly.

WHAT IS THE FASTEST WAY TO CHECK STOCK OR ORDER STATUS?

Send an email our dedicated dealer mailbox at dealer@classicperform.com. Our dealer team will answer you within a 1-2 hours, provided that it's received during business hours.

HOW DO I GET A FREIGHT QUOTE?

Please send dealer@classicperform.com an email with the shipping address and the part number you would like to order. Freight quotes are good for 24-48 hours.

CAN WE USE OUR OWN SHIPPING ACCOUNT # FOR FEDEX OR UPS?

We can use your shipping account if you provide us with the account number. You must establish third party billing arrangements with your carrier. There is a \$5 third party processing fee associated with this order.

CAN WE USE OUR OWN CARRIER FOR PALLET PICKUP?

Yes, you may setup your own LTL freight collect pickup. We can email you the weights and dimensions prior to shipping. There is a \$25 per skid fee when using your own LTL freight carrier.

WHEN SHOULD I EXPECT AN ORDER CONFIRMATION?

If sent before 12 PM PST, you will receive an order confirmation via email before end of day. If sent after 12 PM PST, you will receive a confirmation in the next morning.

DO YOU DROP SHIP?

We offer drop shipping directly to your customers. There is a \$5 drop ship fee associated with using this service and your invoice is sent to you via mail. Our current processing lead times will apply unless you indicate a rush option.

WHAT IS YOUR CURRENT LEAD TIME FOR DROP SHIP ORDERS?

Our processing lead time is usually 3-5 business days, depending on the size of the order and provided that the parts are in stock. Parts that require assembly may take longer for processing.

WE NEED AN ORDER SHIPPED TODAY. WHAT ARE OUR OPTIONS?

You can add RUSH service to any order which guarantees same day or next day shipping, provided that we have the parts in stock and the order is sent before 2 PM PST. There is a \$20 fee associated with this service and the order is shipped via ground, unless a different method is requested.

CAN YOU DROP SHIP INTERNATIONALLY?

We can drop ship orders outside the United States; however, there is a \$50 filing fee associated with this service. Drop shipping outside



the United States requires us to use Third Party Billing on your freight carrier and account number. We are also required to submit your invoice and we need to have your customer's complete contact information.

AM I LIABLE FOR SALES TAX (FOR DROP SHIP OR WILL CALL ORDERS) IN CALIFORNIA?

According to the California State Board of Equalization, any out of state retailers who are engaged in business in California are required to pay tax during the sale. This applies for all orders that are picked up in our showroom or drop shipments made on your behalf to a California address. However, if you currently have a California sellers permit or if you have a Bill of Lading from a logistics company that indicates the parts are being transported outside the state, you will be exempt from the California sales tax. (For more information, CA State Board of Equalization website is <http://www.boe.ca.gov/>)

HOW CAN I REQUEST A HI-RESOLUTION IMAGE FOR OUR CATALOG?

Please send an email with the part numbers requested via the dedicated dealer mailbox - dealer@classicperform.com.

HOW DO I FIND OUT ABOUT YOUR NEW PRODUCTS?

Every quarter, we release a "Dealer Update" that is mailed to you (what you're holding!) Please make sure we always have your current address and email information. Our product line is always expanding so stay tuned!

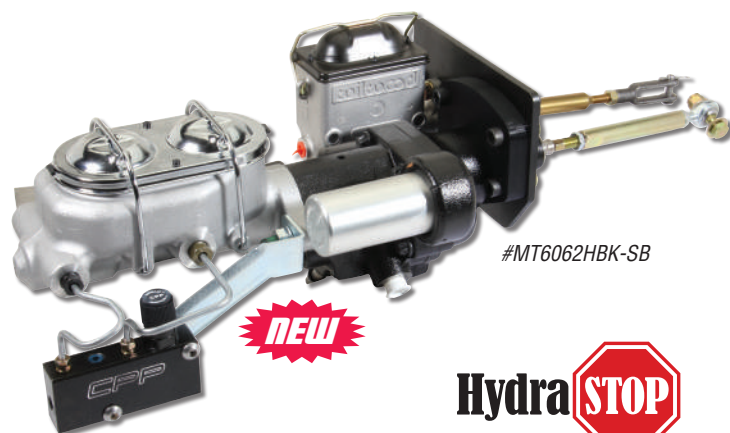
WE HAVE A SHOWROOM AND COULD USE SOME OF YOUR PRODUCTS AS DISPLAY. HOW DO WE ORDER ONE?

Please send us an email at dealer@classicperform.com and one of the Dealer Team members will contact you about your custom product display.



Classic Performance Products, Inc.

CHEVY TRUCKS



#MT6062HBK-SB

HydraSTOP



#7387HBK-SB

STREET BEAST™ HYDRAULIC ASSIST SYSTEM

CPP's high-quality direct bolt-in hydraulic assist kit is designed to upgrade manual or vacuum-assisted brakes with a powerful and compact modern hydraulic assist unit. Everything you need is included to install into your vehicle. Most installations can be accomplished in an afternoon, using common hand tools, with average mechanical skill levels. These systems consist of a direct-fit high performance hydraulic brake assist unit (with options for steel firewall mounting bracket); rubber, high pressure line set; heavy-duty power steering return line; pedal rod hardware and mounting hardware. Using all new parts, this unit puts out an amazing 1800psi at the wheels! The "Street Beast" package includes: Hydraulic Assist Unit with steel firewall mounting bracket, cast aluminum master cylinder with black adjustable prop valve distribution block, rubber pressure and return hoses, all necessary fittings and hardware for installation. Bare Units are Hydraulic Assist only, master cylinder and hoses are not included. *Note: Bare units must be used with 1-1/8" bore master cylinder.*

PART #	DESCRIPTION	RETAIL	JOBBER	DEALER
7387HBK-SB	1973-87, Street Beast, kit	\$809.00	\$749.00	\$599.00
MT6062HBK-SB	1960-62, Hydraulic Clutch Street Beast, kit	\$829.00	\$769.00	\$619.00
BARE UNITS:				
7387HBK-BSB	1973-87, steel bracket, ea	\$469.00	\$439.00	\$349.00
MT6062HBK-BSB	1960-62, Hydraulic steel bracket, each	\$469.00	\$439.00	\$349.00
HOSE KITS:				
HAHK-S	Stainless Hose, kit	\$199.00	\$180.00	\$149.00
HAHK-R	Rubber Hose, kit	\$115.00	\$104.00	\$85.00



#7172SLK-CP-C10

#7382SLK-CP

COMPLETE STEERING LINKAGE KITS FOR ORIGINAL 500 SERIES™

All main wear parts for your steering linkage can now be found in a full kit. Available for all 1963-87 C-10 trucks, our steering linkage kits come complete per application (without centerlink). Our kits include the proper inner tie rods, outer tie rods, adjusting sleeves, pitman arm and idler arm all in one kit! All kits are set up for power steering applications.

PART #	DESCRIPTION	RETAIL	JOBBER	DEALER
CT6364SLK-CP	1963-64, C-10, kit	\$239.00	\$219.00	\$179.00
CT6566SLK-CP	1965-66, C-10, kit	\$219.00	\$204.00	\$165.00
6770SLK-CP-C10	1967-70, C-10, kit	\$209.00	\$194.00	\$159.00
7172SLK-CP-C10	1971-72, C-10, kit	\$199.00	\$184.00	\$149.00
7387SLK-CP-UG	1973-82, C-10, kit	\$199.00	\$184.00	\$149.00
8387SLK-CP	1978-87, C-10, kit	\$199.00	\$184.00	\$149.00

BLOCKS WITH 4° BUILT-IN SHIMS

These blocks will lower your truck and correct the pinion angle 4 degrees. This allows you to properly correct pinion angle without having to buy additional shims. Having the right driveline angles is a must; an incorrect pinion angle will cause drive shaft/ U-joint vibration at highway speeds.



PART #	DESCRIPTION	RETAIL	JOBBER	DEALER
CP39026	1960-72 C10, .5", pair	\$80.00	\$72.00	\$59.00
CP39027	1960-72 C10, 1.0", pair	\$80.00	\$72.00	\$59.00
CP39028	1960-72 C10, 1.5", pair	\$80.00	\$72.00	\$59.00
CP39029	1960-72 C10, 2.0", pair	\$80.00	\$72.00	\$59.00

HYDRAULIC BRAKE ASSIST ACCESSORIES

Our new Install Kit features an in-line filter, fitting kit and brake bleeding syringe. Our in-line filtration extends steering system life and ensures proper performance over the long haul. The fitting kit consists of three brake line adapters with 3/8-24 inverted flare male and three different inverted flare female ends. The included curved tip syringe makes bleeding a snap and is brake fluid and solvent resistant. Finish your HydraStop™ unit with one of our chrome accumulator covers for that show-quality finish.



PART #	DESCRIPTION	RETAIL	JOBBER	DEALER
HBA-1K	Hydraulic Brake Assist Install Kit	\$29.00	\$26.00	\$20.00
20-0038F	In-Line Filter, 3/8" lines, each	\$20.00	\$19.00	\$18.00
CP0105	Brake Bleeding Syringe, curved tip, each	\$5.00	\$4.00	\$3.00
45045	Prop Valve/Master Cylinder Adapter Fitting Kit	\$15.00	\$13.00	\$10.00
CP5100	Chrome Accumulator Cover, each	\$69.00	\$62.00	\$49.00



#CP4810-LS1RK



#CP4810-LS1PK

FITrite™



NEW

LS ENGINE CONVERSION KIT FOR STRAIGHT AXLE

Updating your early hauler to a modern drive train could not be done any easier than with our straight axle LS Series engine crossmember and LS adapter brackets. The crossmember can be bolted to the frame and the FiteRite™ LS adapters will make installation quick and easy.

PART #	DESCRIPTION	RETAIL	JOBBER	DEALER
CP4810-LS1PK	Poly bushings, kit	\$179.00	\$149.00	\$116.00
CP4810-LS1RK	Rubber bushings, kit	\$159.00	\$129.00	\$96.00



#4055UBK



#5559UBK-R

OE REPLACEMENT SQUARE TOP U-BOLT KITS FOR 1940-59 CHEVY TRUCKS

Complete front kit includes all four u-bolts, nuts and washers to assemble the axle properly to your leaf springs. Works with both stock and drop axle applications and with multi-leaf springs.

PART #	DESCRIPTION	RETAIL	JOBBER	DEALER
4055UBK	1940-55, 1st Series, front or rear, each	\$29.00	\$26.00	\$19.00
5559UBK-R	1955-59, 2nd Series, rear, each	\$29.00	\$26.00	\$19.00



NEW

Totally TUBULAR™

PRO-TOURING KITS FOR C-10

CPP's Pro-Touring Kits provide the ultimate performance for an affordable price. Our kits are made in the USA with the quality you have come to expect from Classic Performance Products, Inc. Included with each kit is a front and rear sway bar, coil springs and gas shocks, front upper and lower Totally Tubular™ control arms, rear Totally Tubular™ trailing arms and drop center crossmember. These kits are not for leaf spring trucks.

PART #	DESCRIPTION	RETAIL	JOBBER	DEALER
6370PTK-1	1963-70, kit (shown)	\$2,269.00	\$2,049.00	\$1,679.00
7172PTK-1	1971-72, kit	\$2,269.00	\$2,049.00	\$1,679.00



NEW

TRAILING ARM ANTI SQUAT BRACKET KIT

CPP's Trailing Arm Anti-Squat bracket kit is a perfect fit for our CPP tubular trailing arms as well as stock arms. This kit includes both brackets, adjuster bolts and hardware. They allow for 4 position mounting points for tuning the anti-squat characteristics for improved launches, increased traction, and added power out of turns. Works with coil spring trucks only. *Note: Will not work with #6372LDL crossmember.*

PART #	DESCRIPTION	RETAIL	JOBBER	DEALER
6072ASQB	1960-72 Chevy Truck, kit	\$94.00	\$84.00	\$71.00

Classic Performance Products, Inc.

FORD CAR AND TRUCK



TOTALLY TUBULAR™ UPPER & LOWER CONTROL ARMS AND CONVERSION KIT

New to CPP's product line are upper and lower tubular control arm conversion kits for the 1962-65 Fairlane cars and 1949-53 Ford cars. The 1962-65 Fairlane upper and lower arm kit completely eliminates the stock lower control arm/strut rod assembly and adds a full lower tubular control arm. Included is a set of custom specific mounting brackets that bolt in right where the factory strut rod bracket mounted. Upper tubular arms and brackets are also included in this kit to make a full front end conversion. By using these together your alignment can be fine tuned now since shimming of the upper control arm is possible. The 1949-53 Ford car upper and lower control arms are bolt-in with no modification required. No more cutting and welding on your stock stamped control arms and no more having to adapt them for balljoints. This kit eliminates the stock king pin suspension; adapting a true ball joint conversion setup for the front of your car. Control arm kits come fully assembled with ball joints and cross shafts.

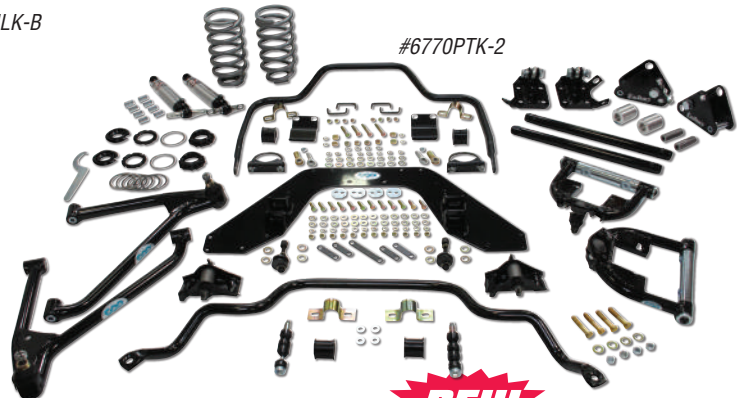
PART #	DESCRIPTION	RETAIL	JOBBER	DEALER
6265TCA-ULK-B	1962-65 Fairlane, black, kit	\$799.00	\$719.00	\$599.00
6265TCA-ULK-S	1962-65 Fairlane, silver, kit	\$799.00	\$719.00	\$599.00
4951TCA-ULK-B	1949-51 Ford Car, black, kit	\$799.00	\$719.00	\$599.00
5253TCA-ULK-B	1952-53 Ford Car, black, kit	\$799.00	\$719.00	\$599.00



BRAKE AND SUSPENSION PACKAGE FOR 1949-53 FORD CARS

CPP now offers a bolt-in brake and suspension package with no modifications required for 1949-53 Ford cars. No more cutting and welding on your stock stamped control arms and no more having to adapt them for balljoints. This kit eliminates the stock king pin suspension; adapting a true ball joint conversion setup for the front of your car. Control arms come fully assembled with ball joints, cross shafts and are powdercoated black finish. The brake kit included is available 5 x 4.5" or 5 x 5.5" bolt patterns. *Note: This package may lower ride height by 1".*

PART #	DESCRIPTION	RETAIL	JOBBER	DEALER
4951BSP-4.5	1949-51 Ford Car, 5x4.5	\$1,299.00	\$1,119.00	\$999.00
4951BSP-5.5	1949-51 Ford Car, 5x5.5	\$1,449.00	\$1,149.00	\$1,029.00
5253BSP-4.5	1952-53 Ford Car, 5x4.5	\$1,299.00	\$1,119.00	\$999.00
5253BSP-5.5	1952-53 Ford Car, 5x4.5	\$1,449.00	\$1,149.00	\$1,029.00



PRO-TOURING KITS

CPP's Pro-Touring Kits provide the best in suspension upgrades to your stock Mustang. Our Stage I kits include Totally Tubular™ upper and lower control arms (also known as our Mini-subframe kit), coil springs, front and rear shocks, front sway bar, spring perches, and rear adjustable sway bar. Replace the traditional coil springs and shocks with CPP's adjustable front coilovers and rear single adjustable shocks and you have our complete Stage 2 kit. Checkout CPP 400 Series™ steering boxes for the ultimate upgrade.

PART #	DESCRIPTION	RETAIL	JOBBER	DEALER
6466PTK-1	1964-66 Mustang, Stage 1, kit	\$1,499.00	\$1,349.00	\$1,199.00
6466PTK-2	1964-66 Mustang, Stage 2, kit	\$2,099.00	\$1,999.00	\$1,839.00
6770PTK-1	1967-70 Mustang, Stage 1, kit	\$1,499.00	\$1,349.00	\$1,199.00
6770PTK-2	1967-70 Mustang, Stage 2, kit	\$2,099.00	\$1,999.00	\$1,839.00



COIL SPRINGS

High quality OE fit and finish stock height and lowered coil springs. Sold in pairs and come black powdered coated.

PART #	DESCRIPTION	RETAIL	JOBBER	DEALER
FCS8088-D	1964-66 Mustang, drop, pair	\$105.00	\$100.00	\$95.00
FCS8088-S	1964-66 Mustang, stock, pair	\$105.00	\$100.00	\$95.00

POWER STEERING CONVERSION KIT FOR FAIRLANE

CPP has released our newest addition to the 400 Series Power Steering Kit family. All kits include a power steering box, pitman arm and floor plate – all ready to bolt on to your frame.



PART #	DESCRIPTION	RETAIL	JOBBER	DEALER
6265PSK	1962-65 Fairlane with NEW box, kit (shown)	\$569.00	\$529.00	\$425.00



NEW

GRANADA PERFORMANCE UPGRADE BRAKE KIT

This high performance upgrade kit contains dual piston aluminum calipers and the rest of the components that you'll need to put on your classic Ford car running Granada spindles. This kit, designed for the 1975-80 Granada spindle, will fit 1965-73 Mustang and many other Ford car applications that utilize the Granada spindle.

PART #	DESCRIPTION	RETAIL	JOBBER	DEALER
6466FBP-MHP-SP	1965-66 Mustang (with spindles), kit	\$869.00	\$811.00	\$753.00
6773FBP-MHP-SP	1967-73 Mustang (with spindles), kit	\$869.00	\$811.00	\$753.00



NEW

GRANADA COMPLETE FRONT BRAKE KIT

This kit includes everything needed to swap out your front drum brakes for OE Granada-type front disc brakes on your 1962-65 Fairlane. This kit uses the larger "boss" type pin used after 1969. Our spindles use the Granada spec outer tire rod hole. *Note: This kit only available with slotted rotors.*

PART #	DESCRIPTION	RETAIL	JOBBER	DEALER
6265FBP-M	1962-65 Fairlane, manual, kit	\$799.00	\$719.00	\$559.00
6265FBP-P	1962-65 Fairlane, power, kit	\$999.00	\$900.00	\$699.00

REAR DROP SHACKLE

Our 2" drop shackles are designed to be a direct replacement for the factory units. Some of the original hardware will have to be reused.



PART #	DESCRIPTION	RETAIL	JOBBER	DEALER
4856SHK-RE	1948-56 Ford Truck, extended, kit	\$95.00	\$84.00	\$49.00

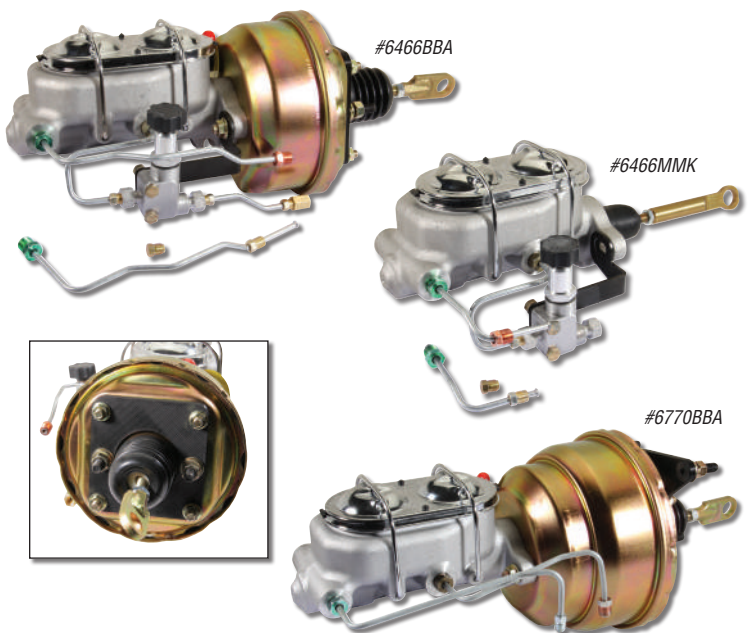


NEW

BOOSTER & MASTER CYLINDER FOR 1962-65 FAIRLANE

Our firewall booster units tuck to the firewall and include a firewall seal to prevent fumes from entering the vehicle. Kits include booster and 3/16" mounting brackets, linkage to connect to the pedal, firewall seal, and our #6265MMK master cylinder (also sold separately). Upgrade your 1962-65 Fairlane from a single to a Corvette-style dual reservoir master. Cylinder bracket and hardware included and available for disc/drum and disc/disc applications.

PART #	DESCRIPTION	RETAIL	JOBBER	DEALER
6265BB-MC	Booster/master cylinder, kit	\$329.00	\$289.00	\$249.00
6265MMK	Master cylinder (disc/drum or disc/disc), kit	\$189.00	\$170.00	\$142.00



BOOSTER KITS FOR 1964-70 MUSTANG

Our brand new Mustang master cylinder and booster kits features a performance booster and a light weight aluminum master cylinder with a unique bracket design that accommodates both manual and power brake firewalls. Power Brake kits are available in 7 and 8 inch diameter boosters for added performance. 1964-66 booster kits includes an adjustable proportioning valve. 1967-70 booster kits also available with 7" and 8" dual diaphragm boosters. *Note: 7" and 8" dual diaphragm boosters not available for 1964-66 units.*

PART #	DESCRIPTION	RETAIL	JOBBER	DEALER
6466MMK	1964-66 Manual Master Cylinder	\$189.00	\$170.00	\$142.00
6770MMK	1967-70 Manual Master Cylinder	\$189.00	\$170.00	\$142.00
6466BBA	1964-66 Power Brake Booster	\$329.00	\$289.00	\$249.00
6770BBA	1967-70 Power Brake Booster	\$289.00	\$249.00	\$219.00

CHEVY FULLSIZE

COMPLETE FRONT SUSPENSION REBUILD KITS

Get everything you need to completely rebuild your front suspension in your classic 1955-64 Fullsize Chevy. Kit includes: upper and lower control arms with ball joints, cross shafts and bushings, stock height spindles, steering arms, shocks, inner and outer tie rod ends, tie rod adjusting sleeves, idler arm, manual steering pitman arm, manual steering centerlink, and stock height or dropped coil springs (specify stock height or dropped coils). Upgraded idler arm with roller bearing also available as an upgrade for 1955-57. *Note: 1958-60 kits use 1963-64 idler arm, pitman arm and centerlink and includes the idler arm conversion bracket. 1958-64 kits do NOT include steering arms.*



#5557CFSR-K

PART #	DESCRIPTION	RETAIL	JOBBER	DEALER
5557CFSR-K	1955-57, kit	\$1,099.00	\$989.00	\$819.00
5860CFSR-K	1958-60, kit	\$1,099.00	\$989.00	\$819.00
6164CFSR-K	1961-64, kit	\$1,059.00	\$989.00	\$819.00

#5964LS1-FRK



ENGINE INSTALL KIT FOR LS1, LS2, LS3, & LS6

Install a modern, dependable, light weight, low maintenance, high-powered V8. Works with all Vortec and most LS engines. May not work with LSX heads, and dry sump oil systems. We've got just what you need to finish off that motor and get it into your ride. Includes oil pan, windage tray, oil pick-up tube, engine mounts, LS engine side mount adapters, ceramic coated headers, transmission crossmember and all mounting hardware.

PART #	DESCRIPTION	RETAIL	JOBBER	DEALER
5964LS1-FRK	1959-64, kit	\$999.00	\$929.00	\$799.00
6570LS1-FRK	1965-70, kit	\$999.00	\$929.00	\$799.00

ORIGINAL REPLACEMENT SPINDLES

Perfect for that concours restoration or when replacing aftermarket drop spindles to get back to stock height. Also works with CPP brake kits. #CP30113 will fit 1958 and #CP30114 will fit 1969-70 when using CPP disc conversions. *Note: #CP30113 spindle pin is .25" longer than original for ease of disc brake installation.*



PART #	DESCRIPTION	RETAIL	JOBBER	DEALER
CP30109	1955-57, pair	\$159.00	\$140.00	\$112.00
CP30113	1959-64, pair	\$159.00	\$140.00	\$112.00
CP30114	1965-68, pair	\$159.00	\$140.00	\$112.00



WIDE WHEEL WELL TUBS

These Wide Wheel Well Tubs will widen the stock steel inner rear wheel wells by 2-5/8" per side, allowing the use of 13" wide tires when used in combination with a rear spring pocket kit (#21-131). Designed for use on hardtop and sedan body styles only and are flanged for easy weld-in to existing trunk walls. *Note: requires cutting and welding.*



PART #	DESCRIPTION	RETAIL	JOBBER	DEALER
WWT-567	1955-57, pair	\$370.00	\$351.00	\$333.00

COMPLETE PERFORMANCE PACKAGES

Get a Complete Performance Package and tune up your chassis with some of the best upgrades for a great price! This package teams up all of the pieces that will convert your ride into a corner carver on the track and a pleasure to drive on the streets. Kits come with front Totally Tubular™ control arms, front coil springs, front performance sway bar, front and rear Black Magic™ performance tuned shocks, 500 Series™ power steering box and 2" drop Modular™ disc brake spindles. 1955-57 kits also come with rear lowered leafs and a rear performance sway bar. 1959-64 kits come with rear Totally Tubular™ trailing arms and rear coils. Arms are available in gloss black or silver powder coat. Put a C.P.P. under your ride today!



PART #	DESCRIPTION	RETAIL	JOBBER	DEALER
5557CPP-K	1955-57, kit	\$2,019.00	\$1,920.00	\$1,515.00
5964CPP-K	1959-64 (with single upper rear arm), kit	\$2,055.00	\$1,950.00	\$1,539.00
5964CPP-KD	1959-64 (with dual upper rear arm), kit	\$2,155.00	\$2,045.00	\$1,615.00



CUSTOM TUBULAR FRAME UPGRADE KIT

This kit upgrades and strengthens the original frame rails for custom builds with a 1-1/2" tubing. Kit includes H-brace and transmission crossmember. It strengthens the frame to allow installation of all body styles including convertible. Welds in to all frame types except original convertible. This kit will fit one- or two-piece frames.

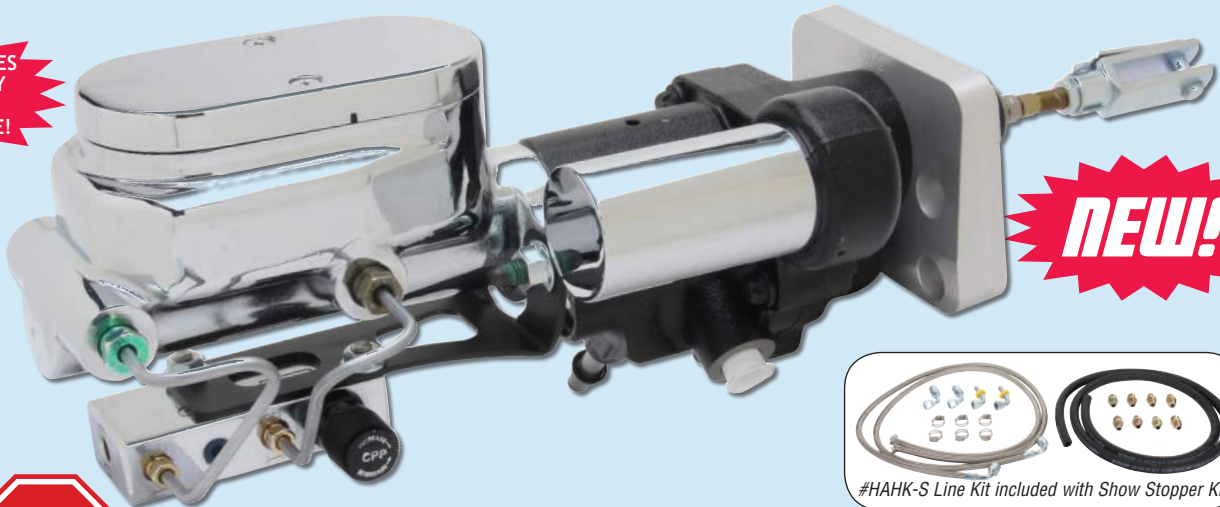
PART #	DESCRIPTION	RETAIL	JOBBER	DEALER
TFK-567	1955-57, kit	\$299.00	\$284.00	\$269.00



Classic Performance Products, Inc.

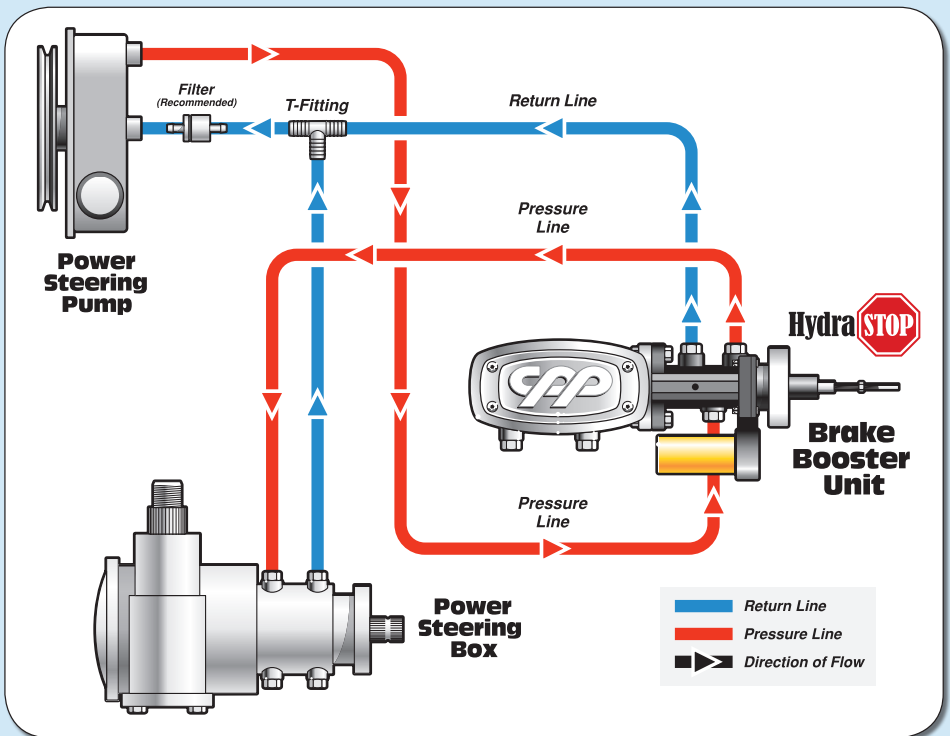
PRODUCT SHOWCASE

SYSTEM INCLUDES
ALL NECESSARY
FITTINGS
AND HARDWARE!



SHOW STOPPER™ HYDRAULIC ASSIST SYSTEM

We now offer a high-quality direct bolt-in hydraulic brake booster kit designed to upgrade manual or vacuum-assisted brakes with a powerful and compact modern hydraulic assist unit. These systems include everything you need to install into your vehicle. Most installations can be accomplished in an afternoon, using common hand tools, with average mechanical skill levels. Consisting of a direct-fit high performance, hydraulic brake assist unit (with options for steel or billet aluminum firewall mounting bracket); braided stainless or rubber, high pressure line set; heavy-duty power steering return line; pedal rod hardware and mounting hardware. The "Show Stopper" package includes: Hydraulic Assist unit with billet aluminum firewall mounting bracket, chrome master cylinder with chrome adjustable prop valve and distribution block, chrome accumulator cover, stainless pressure hoses, rubber return hoses and all necessary fittings and hardware for installation.



PART #	DESCRIPTION	RETAIL	JOBBER	DEALER
MT6062HBK-SS	1960-62 Chevy Truck, w/ hydraulic clutch	\$979.00	\$909.00	\$735.00
6062HBK-SS	1960-62 Chevy Truck, each	\$979.00	\$909.00	\$735.00
6366HBK-SS	1963-66 Chevy Truck, each	\$979.00	\$909.00	\$735.00
6772HBK-SS	1967-72 Chevy Truck, kit	\$979.00	\$909.00	\$735.00
5564HBK-SS90	1955-64 Chevy Fullsize, (BB or Column Shift), kit	\$1,029.00	\$955.00	\$769.00
5564HBK-SS	1955-64 Chevy Fullsize, (SB or Floor Shift), kit	\$979.00	\$909.00	\$735.00
6474HBK-SS	1967-69 Camaro & 1968-74 Nova, kit	\$979.00	\$909.00	\$735.00
6474HBK-SS	1964-72 Chevelle & El Camino, kit	\$979.00	\$909.00	\$735.00
BARE UNIT				
6474HBK-BSS	1967-69 Camaro, 1968-74 Nova, AFX body, Bare Unit (no hoses or master cylinder), ea	\$549.00	\$509.00	\$409.00

USING ALL NEW
PARTS, THIS UNIT
PUTS OUT AN
AMAZING 1800PSI AT
THE WHEELS!

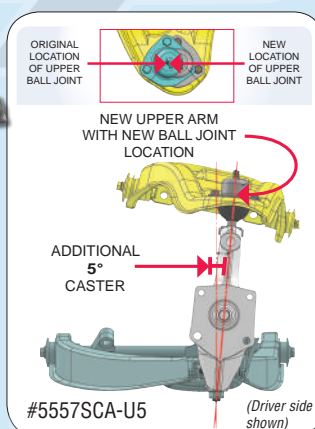


#6474HBK-BSS



1955-57 CHEVY FULLSIZE

NEW



STOCK-TYPE CONTROL ARMS

These factory-correct upper and lower front control arms are exactly what you're looking for. Both versions are precision engineered and stamped from heavy-gauge steel for superior strength and durability. Complete with ball joints and cross shafts with a black beautiful semi-gloss painted finish. Your choice of rubber or poly bushings. #5557SCA-U5 and #5557SCA-U5-P — 5° arms have the caster built right in to the arm and are ideal for modern power steering (500 Series™) systems and they give a more responsive road feel to your classic's handling and will also allow the steering wheel to return to center (see illustration above).



PART #	DESCRIPTION	RETAIL	JOBBER	DEALER
6372SCA-U	1963-72 Chevy Truck, upper, pair	\$199.00	\$175.00	\$132.00
6372SCA-L	1963-72 Chevy Truck, lower, pair	\$279.00	\$246.00	\$209.00

PART #	DESCRIPTION	RETAIL	JOBBER	DEALER
KITS WITH RUBBER BUSHINGS				
5557SCA-U	1955-57 Chevy Fullsize, upper, (factory geometry), pair	\$199.00	\$179.00	\$139.00
5557SCA-U5	1955-57 Chevy Fullsize, upper, (with added 5° caster), pair	\$199.00	\$179.00	\$139.00
5557SCA-L	1955-57 Chevy Fullsize, lower, pair	\$269.00	\$250.00	\$200.00
5864SCA-U	1958-64 Chevy Fullsize, upper, pair	\$199.00	\$179.00	\$139.00
5864SCA-L	1958-64 Chevy Fullsize, lower, pair	\$269.00	\$250.00	\$200.00
6774SCA-U	1968-74 Nova & 1967-69 Camaro, upper, pr	\$149.00	\$134.00	\$119.00
6774SCA-L	1968-74 Nova & 1967-69 Camaro, lower, pr	\$199.00	\$175.00	\$132.00
6774SCA-ULK	1968-74 Nova & 1967-69 Camaro, upper & lower, set	\$299.00	\$269.00	\$239.00
6472SCA-U	1964-72 Chevelle, upper, pair	\$299.00	\$285.00	\$269.00
6472SCA-L	1964-72 Chevelle, lower, pair	\$299.00	\$285.00	\$269.00

PART #	DESCRIPTION	RETAIL	JOBBER	DEALER
KITS WITH POLYPLUS BUSHINGS				
5557SCA-U-P	1955-57 Chevy Fullsize, upper, (factory geometry) pair	\$219.00	\$196.00	\$155.00
5557SCA-U5-P	1955-57 Chevy Fullsize, upper, (with added 5° caster) pair	\$219.00	\$196.00	\$155.00
5557SCA-L-P	1955-57 Chevy Fullsize, lower, pair	\$289.00	\$267.00	\$215.00
5864SCA-U-P	1958-64 Chevy Fullsize, upper, pair	\$219.00	\$196.00	\$155.00
5864SCA-L-P	1958-64, Chevy Fullsize, lower, pair	\$289.00	\$267.00	\$215.00
6774SCA-U-P	1968-74 Nova & 1967-69 Camaro, upper, pr	\$169.00	\$149.00	\$135.00
6774SCA-L-P	1968-74 Nova & 1967-69 Camaro, lower, pr	\$219.00	\$196.00	\$155.00
6774SCA-ULK-P	1968-74 Nova & 1967-69 Camaro, upper & lower, set	\$319.00	\$287.00	\$265.00
6472SCA-U-P	1964-72 Chevelle, upper, pair	\$319.00	\$303.00	\$287.00
6472SCA-L-P	1964-72 Chevelle, lower, pair	\$319.00	\$303.00	\$287.00

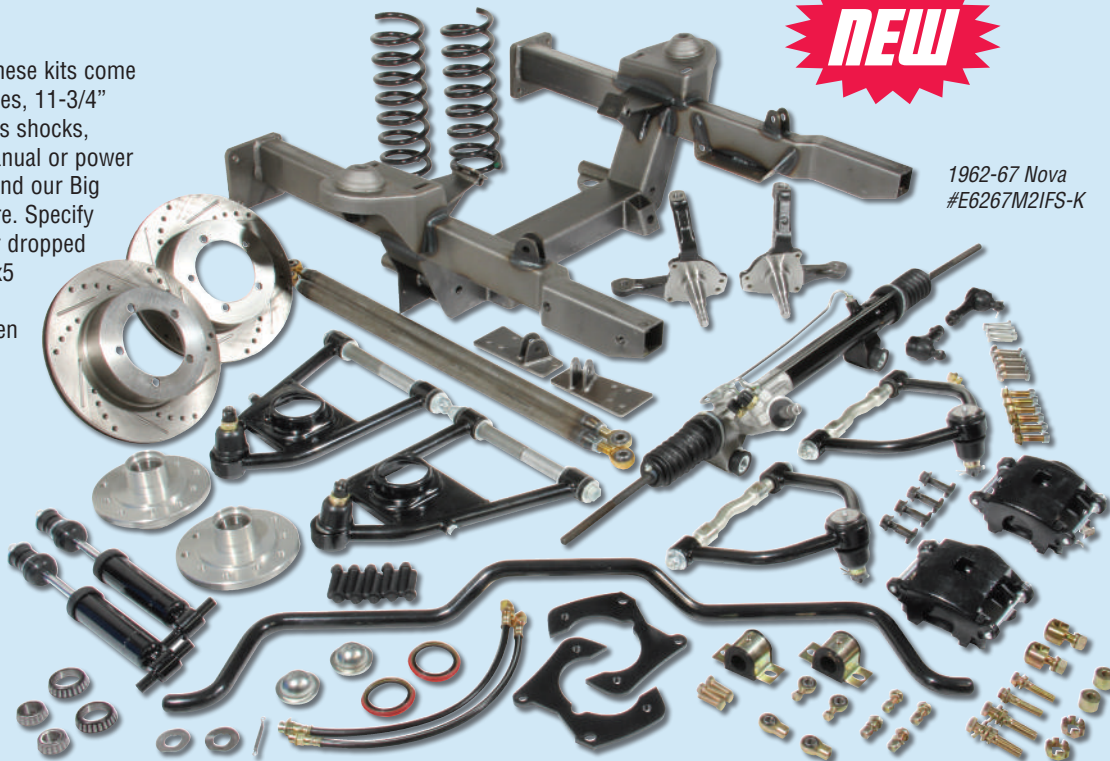
Classic Performance Products, Inc.

PRODUCT FEATURE

MUSTANG II IFS SYSTEMS

An independent suspension system. These kits come with crossmember, coil springs, spindles, 11-3/4" diameter rotor performance brakes, gas shocks, upper and lower control arms, new manual or power rack & pinion, sway bar, forged hubs and our Big Bore™ calipers plus mounting hardware. Specify manual or power steering and stock or dropped spindles. Available in 5x4.5, 5x4.75, 5x5 or 5x5.5 and 6x5.5 lug patterns. Some applications include boxing plates (when required).

- Performance Brake Kit
- 11-3/4" Rotors
- Forged Aluminum Hubs
- Manual or Power Rack & Pinion
- 3/4" Sway Bar
- Stock or Drop Spindles
- Big Bore™ Calipers
- Tubular Control Arms
- Choose Any Bolt Pattern



1962-67 Nova
#E6267M2IFS-K

PART #	DESCRIPTION	RETAIL	JOBBER	DEALER
E6267M2IFS-K	1962-67 Nova, Economy Mustang II, complete kit	\$1,799.00	\$1,629.00	\$1,299.00
E3739M2IFS-K	1937-39 Chevy Truck, Economy Mustang II, complete kit	\$1,489.00	\$1,349.00	\$1,099.00
E4754M2IFS-K	1947-54 Chevy Truck, Economy Mustang II, complete kit	\$1,489.00	\$1,349.00	\$1,099.00
E5559M2IFS-K	1955-59 Chevy Truck, Economy Mustang II, complete kit	\$1,489.00	\$1,349.00	\$1,099.00
E3748M2IFS-K	1937-48 Chevy Fullsize, Economy Mustang II, complete kit	\$1,489.00	\$1,349.00	\$1,099.00
E4954M2IFS-K	1949-54 Chevy Fullsize, Economy Mustang II, complete kit	\$1,489.00	\$1,349.00	\$1,099.00
E3540M2IFS-K	1935-40 Ford Car, 1935-41 Ford Truck, Economy Mustang II, complete kit	\$1,489.00	\$1,349.00	\$1,099.00
E6470M2IFS-K	1964 1/2-70 Ford Mustang, Economy Mustang II, complete kit	\$1,489.00	\$1,349.00	\$1,099.00
E4852M2IFS-K	1948-52 Ford Truck, Economy Mustang II, complete kit	\$1,489.00	\$1,349.00	\$1,099.00
E5356M2IFS-K	1953-56 Ford Truck, Economy Mustang II, complete kit	\$1,489.00	\$1,349.00	\$1,099.00
E5760M2IFS-K	1957-60 Ford Truck, Economy Mustang II, complete kit	\$1,489.00	\$1,349.00	\$1,099.00



Inner Fender Panel
#6265IFP (1962-65 Nova only)



Inner Fender Panel
#6667IFP (1966-67 Nova only)



Coilover Upgrade



Air Bag Upgrade



Wilwood Caliper Upgrade
Available in black or red.

UPGRADES

PART #	DESCRIPTION	RETAIL	JOBBER	DEALER
6265IFP	1962-65 Nova, inner fender panels, pair	\$199.00	\$179.00	\$139.00
6667IFP	1966-67 Nova, inner fender panels, pair	\$199.00	\$179.00	\$139.00
M2ABU-K	Air Bag Upgrade Kit	\$599.00	\$599.00	\$599.00
M2COK	Coilover Upgrade Kit	\$399.00	\$379.00	\$359.00
-WWB	Wilwood Caliper Upgrade Kit, black	\$199.00	\$199.00	\$199.00
-WWR	Wilwood Caliper Upgrade Kit, red	\$199.00	\$199.00	\$199.00

PRODUCT FEATURE

PERFORMANCE BRAKE KIT

*Shown with optional upgraded rotors.



PERFORMANCE BRAKE

PACKAGE FOR MUSTANG II O.E. WHEEL 5 & 6-LUG BRAKE KIT

The NEW Mustang II Performance Brake Package is not your common small brake setup. CPP has introduced a complete 2-piece rotor and hub system that utilizes a forged aluminum hub, 11.75" slip-on rotor, CPP Big Bore Calipers and all hardware required to easily bolt onto a stock or 2" drop spindle. Most common suppliers offer a stock 9" diameter rotor or an aftermarket 11" rotor brake kit for these setups. CPP's kit increases stopping power by 20% with its increased rotor size and new Big Bore calipers. Available in all popular bolt patterns. Spindles not included.

PART #	DESCRIPTION	RETAIL	JOBBER	DEALER
M2WBK-450	with 5x4.5 lug pattern, kit	\$499.00	\$449.00	\$375.00
M2WBK-475	with 5x4.75 lug pattern, kit	\$499.00	\$449.00	\$375.00
M2WBK-5	with 5x5 lug pattern, kit	\$499.00	\$449.00	\$375.00
M2WBK-5.5	with 5x5.5 lug pattern, kit	\$499.00	\$449.00	\$375.00
M2WBK-6	with 6x5.5 lug pattern, kit	\$499.00	\$449.00	\$375.00
*slotted cross drilled rotors upgrade, pair		\$75.00	\$75.00	\$60.00



MUSTANG II CROSSMEMBERS

Will bolt-in or weld into your original frame and have provisions for Mustang II components to bolt-on. Drastically improve suspension and braking.

PART #	APPLICATION	RETAIL	JOBBER	DEALER
E3739M2-X	1937-39 Chevy Truck, each	\$209.00	\$189.00	\$149.00
E4754M2-X	1947-54 Chevy Truck, each	\$209.00	\$189.00	\$149.00
E5559M2-X	1955-59 Chevy Truck, each	\$209.00	\$189.00	\$149.00
E3748M2-X	1937-48 Chevy Car, each	\$209.00	\$189.00	\$149.00
E4954M2-X	1949-54 Chevy Car, each	\$209.00	\$189.00	\$149.00
E6267M2-X	1962-67 Nova, welded, each	\$509.00	\$459.00	\$359.00

PART #	APPLICATION	RETAIL	JOBBER	DEALER
E3540M2-X	1935-40 Ford car and 1935-41 Ford truck, each	\$209.00	\$189.00	\$149.00
E6470M2-X	1964 1/2 - 70 Mustang, each	\$209.00	\$189.00	\$149.00
E4852M2-X	1948-52 Ford truck, each	\$209.00	\$189.00	\$149.00
E5356M2-X	1953-56 Ford truck, each	\$209.00	\$189.00	\$149.00
E5760M2-X	1957-60 Ford truck, each	\$209.00	\$189.00	\$149.00

NEW CPP MUSTANG II SWAY BAR FOR 1962-67 NOVA

Specifically designed for CPP's Nova Mustang II IFS; This sway bar bolts to the front sway bar tabs already welded to the CPP Subframe. This assembly mounts toward the front of the car and connects directly to the lower control arm mounts. This bar is a solid 1" diameter and includes all mounting hardware.

PART #	DESCRIPTION	RETAIL	JOBBER	DEALER
CPP6267M2SB	1962-67 Nova, kit	\$129.00	\$119.00	\$97.00



NEW

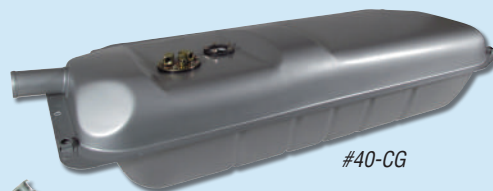
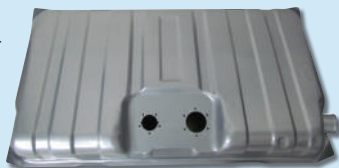
Classic Performance Products, Inc.

FUEL INJECTION-READY TANKS



#TM32AN-T

#TM41-T



#40-CG



#53-CGX



#TM31-T



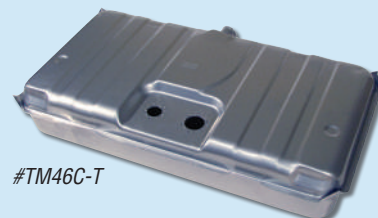
#556-CG



#TM34B-T



#TM34E-T



#TM46C-T

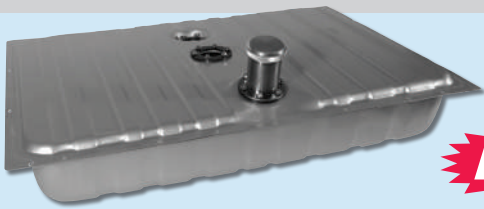
EFI STEEL FUEL TANKS

For 30 years, Tanks Inc. has been manufacturing quality replacement fuel tanks for classic cars and trucks. Tanks feature EFI-style internal baffling and extra large 4.3 liter internal fuel tray to prevent fuel pump starvation. Tanks look like OE tanks when installed. Tanks are galvanized steel powdered coated silver for maximum rust protection. Accepts all 5-hole aftermarket sending units. Leak tested for your safety. Mounting hardware included. #TM32AN-T and #TM32BN-T feature notched corners making them perfect for mini-tub applications. #TM46C-T and #TM41-T tanks feature extra large 4.3 liter internal fuel tray. Chevelle tanks includes 2-piece neck design that simply connects with supplied 2" ID rubber hose. Fuel pump and sender are recessed in the tank for easy installation with no modification needed to your car.

Note: Straps not included.



PART #	DESCRIPTION	RETAIL	JOBBER	DEALER
40-CG	1940 Chevrolet, 14.5 gallon, 39-3/4" x 16-1/4" x 7-1/2", die stamped steel, each	\$200.00	\$190.00	\$180.00
48-CG	1941-48 Chevrolet, 16 gallon, stock depth, 29-1/2" x 21-1/4" x 8-1/4", fuel injection, each	\$200.00	\$180.00	\$160.00
53-CGX	1953-54 Chevrolet, 18 gallon, 29-1/2" x 21-1/4" x 9-1/4", extra capacity, each	\$200.00	\$190.00	\$180.00
556-CG	1955-56 Chevrolet, 15.5 gallon, 24-1/2" x 25" x 8", fuel injection, each	\$210.00	\$199.00	\$189.00
570-CG	1957 Chevrolet, 15.5 gallon, fuel injection, each	\$210.00	\$199.00	\$189.00
TM31-T	1961-64 Chevrolet Bel Air, Biscayne and Impala, 20 gallon, 38" x 15-1/8" x 11-1/8", fuel injection, each	\$225.00	\$201.00	\$180.00
TM32AN-T	1967-68 Camaro, 39-3/8" x 20-7/8" x 8-3/4", EFI with narrowed corners, each	\$305.00	\$290.00	\$275.00
TM32BN-T	1969 Camaro, 39-3/8" x 20-7/8" x 8-3/4", EFI with narrowed corners, each	\$305.00	\$290.00	\$275.00
TM41-T	1962-67 Nova, 16 gallon, 34-1/4" x 18-7/8" x 8-3/4", fuel injection, each	\$225.00	\$214.00	\$203.00
TM46C-T	1971-72 Nova, 38" x 19-3/8" x 8-3/8", fuel injection, each	\$225.00	\$214.00	\$203.00
TM34B-T	1964-67 Chevelle, 37-1/4" x 30" x 7-3/4", fuel injection, each	\$225.00	\$214.00	\$203.00
TM34E-T	1970 Chevelle, 20 gallon, 39-1/4" x 24-1/2" x 7-3/4", fuel injection, each	\$225.00	\$214.00	\$203.00
TM34U-T	1971-72 Chevelle, 20 gallon, 39-1/4" x 24-1/2" x 7-3/4", fuel injection, each	\$225.00	\$214.00	\$203.00



NEW

MUSTANG FUEL TANK FOR FUEL INJECTION

Tanks Inc. fuel tank features EFI-style internal baffling and extra large 4.3 liter internal fuel tray to prevent fuel pump starvation. Uses aftermarket 5 bolt hole senders. Multiple ohm ranges available to work with factory or aftermarket gauges. Comes with bolt-on neck and billet cap. 32-3/4" x 24-1/2" x 7-1/2".

PART #	DESCRIPTION	RETAIL	JOBBER	DEALER
MU-T	1964-68 Mustang, 16 gallon, each	\$235.00	\$223.00	\$211.00



#32Z-D2
39" x 17" x 10"



#40G
42-1/2" x 15-1/2" x 10"



#48G
33-1/2" x 19" x 8"

ALLOY COATED STEEL FUEL TANKS - FORD APPLICATIONS

#32Z-D2, #40G and #48G are fully baffled tanks and have an internal reservoir tray, great for carbs and absolutely necessary for fuel injection. #32Z-D2 are stamped to look original, but with added street rod features. Tanks are alloy coated steel for rust protection (#48G is galvanized steel painted silver).



#51F
24-1/2" x 23-1/2" x 7-3/4"

PART #	DESCRIPTION	RETAIL	JOBBER	DEALER
32Z-D2	1932 Ford, 14.5 gal., extra deep capacity, each	\$299.00	\$284.00	\$269.00
40G	1938-40 Ford & 1938-41 Ford truck, 16 gal., each	\$215.00	\$204.00	\$194.00
48G	1941-48 Ford & 1939-48 Mercury, 17 gal., each	\$235.00	\$223.00	\$212.00

NEW



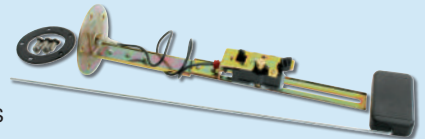
LS FUEL LINE KIT

Purchasing an LS style gas tank conversion? We now have a complete fuel line and regulator kit to plumb all your fuel lines in your ride. Comes with fuel hose, all fittings (standard or 45 degree ends), and regulator/filter combo.

PART #	DESCRIPTION	RETAIL	JOBBER	DEALER
LS-LINE-KIT	Fuel line kit for LS engine	\$235.00	\$212.00	\$188.00
LS-LINE-KIT45	Fuel line kit for LS engine with 2- 45 degree hose ends	\$246.00	\$228.00	\$210.00

GAS TANK SENDING UNITS

For use with our aluminum, stainless, and zinc painted gas tanks.

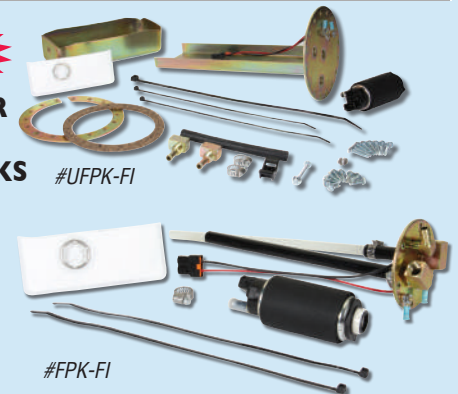


PART #	DESCRIPTION	RETAIL	JOBBER	DEALER
VSU-3	0-30 ohm, each	\$49.00	\$43.00	\$35.00
VSU-9	0-90 ohm, each	\$49.00	\$43.00	\$35.00
VSU-F	73-10 ohm, each	\$49.00	\$43.00	\$25.00
VSU-240	240-330 ohm, each	\$69.00	\$43.00	\$25.00

NEW

FUEL PUMP KITS FOR ORIGINAL-STYLE FUEL INJECTED TANKS

These high quality 8 amp/12 volt electric fuel pumps are quiet, reliable, and a must for your fuel injected engine. Kits include cushioned mounting brackets, fittings, clamps, and hardware.



PART #	DESCRIPTION	RETAIL	JOBBER	DEALER
UFPK-FI	Universal In-Tank Pump, kit	\$235.00	---	\$199.00
FPK-FI	255 Liters per hour - up to 600hp	\$220.00	\$203.00	\$187.00
LV-FPK-FI	109 Liters per hour for TBI	\$190.00	\$181.00	\$162.00
HV-FPK-FI	400 Liters per hour - 500-1000hp high perf.	\$280.00	\$266.00	\$238.00

LS FUEL FILTER REGULATOR KIT

These fuel regulator/filter combinations are a must with any LS engine conversion. Available in standard barb or -6AN Quick disconnect fittings. Perfect for plumbing your own fuel system.



PART #	DESCRIPTION	RETAIL	JOBBER	DEALER
LS9904	LS fuel filter/regulator 58 psi, each	\$35.00	\$33.00	\$30.00
LS9904-KIT	LS fuel filter/regulator 58 psi, with -6 AN quick disconnect fittings, kit	\$70.00	\$65.00	\$60.00

Classic Performance Products, Inc.

NOVA / CAMARO



NEW!



HYDRA STOP™ STREET BEAST™ HYDRAULIC ASSIST SYSTEM FOR 1962-67 NOVA

We now offer a high-quality direct bolt-in hydraulic brake booster kit designed to upgrade manual or vacuum-assisted brakes with a powerful and compact modern hydraulic assist unit. Consisting of a direct-fit high performance, hydraulic brake assist unit (with options for steel firewall mounting bracket); braided stainless or rubber, high pressure line set; heavy-duty power steering return line; pedal rod hardware and mounting hardware. Using all new parts, this unit puts out an amazing 1800psi at the wheels! The "Street Beast" package includes: Hydraulic Brake Assist Unit with steel firewall mounting bracket, aluminum Corvette-style master cylinder, side mounted Prop & Stop Block kit, rubber pressure & return hoses and all necessary fittings and hardware for installation. Bare Units are Hydraulic Assist **only**, master cylinder and hoses are **not** included.



PART #	DESCRIPTION	RETAIL	JOBBER	DEALER
6267HBK-SB*	1962-67 Nova, Street Beast, each	\$829.00	\$769.00	\$619.00
BARE UNITS:				
6267HBK-BSB*	1962-67 Nova, steel bracket, each	\$469.00	\$439.00	\$349.00

(*will only work with Mustang II IFS, will not work with factory strut towers)

HYDRAULIC BRAKE ASSIST ACCESSORIES

Our new Install Kit features an in-line filter, fitting kit and brake bleeding syringe. Our in-line filtration extends steering system life and ensures proper performance over the long haul. The fitting kit consists of three brake line adapters with 3/8-24 inverted flare male and three different inverted flare female ends. The included curved tip syringe makes bleeding a snap as well as being brake fluid and solvent resistant. Finish your HydraStop unit with one of our chrome accumulator covers for that show quality finish.



PART #	DESCRIPTION	RETAIL	JOBBER	DEALER
HBA-IK	Hydraulic Brake Assist Install Kit	\$29.00	\$26.00	\$20.00
20-0038F	In-Line Filter, 3/8" lines, each	\$20.00	\$19.00	\$18.00
CP0105	Brake Bleeding Syringe, curved tip, each	\$5.00	\$4.00	\$3.00
45045	Prop Valve/Master Cylinder Adapter Fitting Kit	\$15.00	\$13.00	\$10.00
CP5100	Chrome Accumulator Cover, each	\$69.00	\$62.00	\$49.00

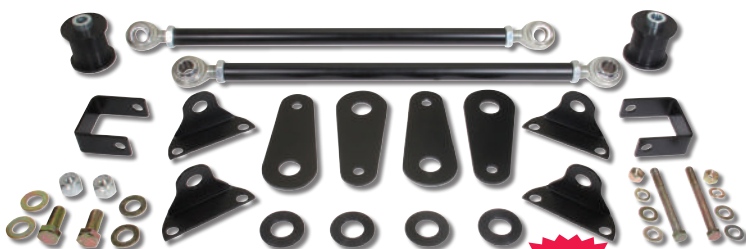


NEW!

TUBS FOR CAMARO

CPP's new tubs are inner wheel housings that are 2.25" wider than original and are designed to accommodate wider tire and wheel packages, including wheels that are 11" and tires as wide as 13" (335 mm). They are designed for a perfect fit, retain a stock appearance, steel EDP coated replacements. These require cutting and welding and are excellent for prototyping and custom builds.

PART #	DESCRIPTION	RETAIL	JOBBER	DEALER
WWTI-789	1967-69 Camaro, mini tubs	\$224.00	\$215.00	\$215.00
WWT-789	1969 Camaro, complete wider wheel tubs	\$329.00	\$315.00	\$284.00



NEW!

CPP TRACTION BARS

CPP's Traction Bars are constructed from 1-inch 0.156-wall 4130 (same as our Pro Touring sway bar), with 3/16-inch laser-cut, bent-steel mounts and self-lubricating plastic D-type bushings (same as used in our control arms) and 3/4-inch rod ends. The front mount features additional ground clearance and a forward-slanted approach angle; this makes it safer, if in the event it does hit something, the angled approach will act as a skid plate and help lift the car over the obstacle. The portion of the linkage that contacts the spring is a wider flat surface; this reduces the stress on the top of the leaf spring. The pivot positions are relocated to optimize weight transfer while reducing the spring load.

PART #	DESCRIPTION	RETAIL	JOBBER	DEALER
6267TB	1962-67 Nova, kit	\$299.00	\$269.00	\$225.00

KEVKO RACING OIL PAN KITS

CPP now offers Kevko Racing Oil Pan Kits. The Street Pan and Road Race Pans are 7-1/2" deep, 9-1/2" long, and 13-1/2" wide with gating for right and left turns. Street Pan has a 6 quart capacity and the Road Race is 7 quarts with filter. These pans are designed for early Nova V8 conversions and **provide additional clearance for stroked small block Chevy motors** and also allow for the most possible ground clearance. This kit includes a pick-up tube for either a standard or a HIGH volume oil pump and also includes 1 piece felpro oil pan gasket kit. This pan will NOT fit if your car has factory power assist steering. Kits are available for early SBC with LH dipstick, late SBC with RH dipstick and 2 piece rear main seal and for late SBC with RH dipstick and 1 piece rear main seal. The engine install kits also include Hedman coated full length headers and SBC motor perches.

NEW!**ENGINE INSTALL KITS W/ STREET PAN**

PART #	DESCRIPTION	RETAIL	JOBBER	DEALER
6267KSK-SB1S	w/early SBC LH dipstick and standard oil pump, kit	\$819.00	\$789.00	\$749.00
6267KSK-SB1HV	early SBC LH dipstick and hi volume oil pump, kit	\$819.00	\$778.00	\$737.00
6267KSK-SB2S	w/SBC RH dipstick (2 pc rear main) and standard oil pump, kit	\$819.00	\$778.00	\$737.00
6267KSK-SB2HV	w/SBC RH dipstick (2 pc rear main) and hi vol oil pump, kit	\$819.00	\$778.00	\$737.00
6267KSK-SB3S	w/SBC RH dipstick (1 pc rear main) and standard oil pump, kit	\$819.00	\$778.00	\$737.00
6267KSK-SB3HV	w/SBC RH dipstick (1 pc rear main) and hi vol oil pump, kit	\$819.00	\$778.00	\$737.00

ENGINE INSTALL KITS W/ ROAD RACE PAN

PART #	DESCRIPTION	RETAIL	JOBBER	DEALER
6267KRRK-SB1S	w/early SBC LH dipstick and standard oil pump, kit	\$819.00	\$778.00	\$737.00
6267KRRK-SB1HV	early SBC LH dipstick and hi volume oil pump, kit	\$819.00	\$778.00	\$737.00
6267KRRK-SB2S	w/SBC RH dipstick (2 pc rear main) and standard oil pump, kit	\$819.00	\$778.00	\$737.00
6267KRRK-SB2HV	w/SBC RH dipstick (2 pc rear main) and hi vol oil pump, kit	\$819.00	\$778.00	\$737.00
6267KRRK-SB3S	w/SBC RH dipstick (1 pc rear main) and standard oil pump, kit	\$819.00	\$778.00	\$737.00
6267KRRK-SB3HV	w/SBC RH dipstick (1 pc rear main) and hi vol oil pump, kit	\$819.00	\$778.00	\$737.00

NEW!**COMPLETE FRONT SUSPENSION REBUILD KIT**

Get everything you need to completely rebuild your front suspension in your classic Nova and Camaro. Kit includes: upper and lower control arms with ball joints, cross shafts and bushings, stock height spindles, steering arms, shocks, inner and outer tie rod ends, tie rod adjusting sleeves, idler arm, manual steering pitman arm, manual steering centerlink, stock height or dropped coil springs (specify stock height or dropped coils).

PART #	DESCRIPTION	RETAIL	JOBBER	DEALER
67CF SR-K	1967 Camaro	\$1,099.00	\$989.00	\$819.00
6869CF SR-K	1968-69 Camaro	\$1,099.00	\$989.00	\$819.00
70CF SR-K	1970 Nova	\$1,099.00	\$989.00	\$819.00
7174CF SR-K	1971-74 Nova	\$1,099.00	\$989.00	\$819.00

Classic Performance Products, Inc.

CHEVELLE



*Shown with optional upgraded rotors & hoses.

COMPLETE FRONT & REAR DISC/DRUM BRAKE KITS

This kit is ideal to freshen up all the brakes on your car that already has been converted to front power disc brakes or great as an upgrade if you are wanting to add power front disc brakes to your drum/drum vehicle. These kits come complete with vacuum brake booster, master cylinder, proportioning valve, front rotors, loaded calipers, bearings, seals, front hoses, spindles, brackets, dust shields, rear brake shoe assemblies and 9.5" rear drums. Available with 9" or 11" booster and with plain rotors/rubber brake hoses or drilled rotors/stainless hoses in the -UG kits.

PART #	DESCRIPTION	RETAIL	JOBBER	DEALER
6472FRBP2-9	1964-72, standard, 9" booster, kit	\$899.00	\$810.00	\$669.00
6472FRBP2-9UG	1964-72, upgrade, 9" booster, kit	\$999.00	\$900.00	\$744.00
6772FRBP2-11	1967-72, standard, 11" booster, kit	\$899.00	\$810.00	\$669.00
6772FRBP2-11UG	1967-72, upgrade, 11" booster, kit	\$999.00	\$900.00	\$744.00



ENGINE MOUNTING BRACKETS

These brackets are reproductions of the original frame mount brackets. They come coated for protection and are available in both small block and big block applications.

PART #	DESCRIPTION	RETAIL	JOBBER	DEALER
6467MP-SB	1964-67 Chevelle, small block, pair	\$69.00	\$65.00	\$62.00
6467MP-BB	1964-67 Chevelle, big block, pair	\$69.00	\$65.00	\$62.00
6872MP-SBB	1968-72 Chevelle, small or big block, pair	\$69.00	\$65.00	\$62.00

OE DRUM HUB KIT

Replace your worn out drum hubs with this kit that contains all new components.



PART #	DESCRIPTION	RETAIL	JOBBER	DEALER
6474HK-OE	1964-72, kit	\$69.00	\$50.00	\$40.00



COMPLETE FRONT SUSPENSION REBUILD KIT

Get everything you need to completely rebuild your front suspension in your classic Chevelle and El Camino. Kit includes: upper and lower control arms with ball joints, cross shafts and bushings, stock height spindles, steering arms, shocks, inner and outer tie rod ends, tie rod adjusting sleeves, idler arm, manual steering pitman arm, manual steering centerlink, stock height or dropped coil springs (specify stock height or dropped coils).

PART #	DESCRIPTION	RETAIL	JOBBER	DEALER
6466CF SR-K	1964-66 Chevelle	\$1,299.00	\$1,189.00	\$1,019.00
67CHCF SR-K	1967 Chevelle	\$1,299.00	\$1,189.00	\$1,019.00
6870CF SR-K	1968-70 Chevelle	\$1,299.00	\$1,189.00	\$1,019.00
7172CF SR-K	1971-72 Chevelle	\$1,299.00	\$1,189.00	\$1,019.00

REPLACEMENT POWER STEERING BOXES

OE replacements designed to fit and function equally or better than the originals. Most of these units are also suitable for use when upgrading from manual to power steering. When you notice your current steering box leaking on the driveway, or your muscles ache each time you turn the wheel, it's time to consider an OE replacement steering box. Fits 1964-76 Midsize, 1968-76 Nova, 1967-79 Camaro. Uses 3/4-30" spline rag joint, part #RJC-730R.



PART #	DESCRIPTION	RETAIL	JOBBER	DEALER
CP7525Q	Quick Ratio, 2.5	\$299.00	\$269.00	\$225.00
CP7525V	Stock Ratio, 3.5	\$299.00	\$269.00	\$225.00
CP7525C	Stock Ratio, 3.5	\$299.00	\$269.00	\$225.00

Totally
TUBULAR™



#7887PTK-2

NEW!

STAGE 1 - Includes front and rear lowered coil springs, front and rear shocks, front and rear protouring sway bar kits, front upper and lower Totally Tubular™ arms, and rear Totally Tubular™ trailing arms.

STAGE 2 - Includes front and rear tubular arms, front coil over, rear aluminum body shocks, rear dropped coils and front and rear sway bars.

PRO-TOURING KITS FOR 1978-87 G-BODY

CPP's new Pro-Touring Kits provide the ultimate performance for an affordable price. Our kits are made in the USA with the quality you have come to expect from Classic Performance Products. Included with each kit is a front and rear pro-touring sway bar, combined with the lowered stance and performance enhancements of either the lowered coil springs and gas shock combo in the Stage I kits or the adjustable coil over package in the Stage II kits would be great on their own.

PART #	DESCRIPTION	RETAIL	JOBBER	DEALER
7887PTK-1	1978-87 G-body, Stage 1, kit	\$1,929.00	\$1,736.00	\$1,545.00
7887PTK-2	1978-87 G-body, Stage 2, kit (shown)	\$2,550.00	\$1,989.00	\$1,713.00

NEW!



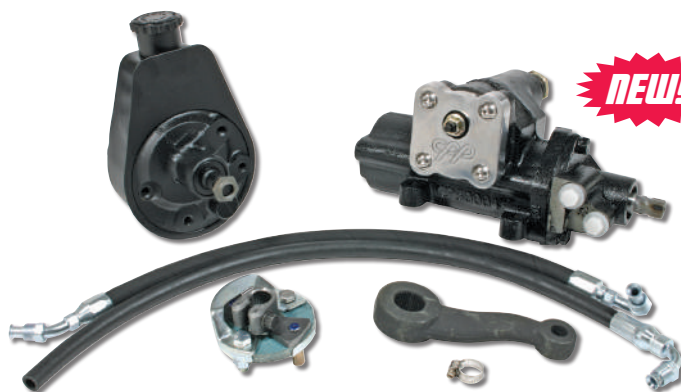
Hydra **STOP**

HYDRASTOP BRAKE ASSIST SYSTEM

Our high-quality direct bolt-in hydraulic brake booster kit is designed to upgrade your manual or vacuum-assisted brakes with a powerful and compact modern hydraulic assist unit. Most installations can be accomplished in an afternoon, using common hand tools, with average mechanical skill levels. Comes with hose kit.

PART #	DESCRIPTION	RETAIL	JOBBER	DEALER
7887HBK-SB	1978-87 G-body	\$829.00	\$769.00	\$619.00
7887HBK-BSB	1978-87 G-body	\$469.00	\$439.00	\$349.00

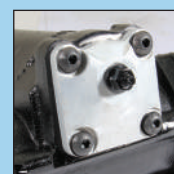
NEW!



POWER STEERING CONVERSION KITS

500Series™

CPP has the newest technology power steering conversion kits for your classic! We've got you covered with our 500 Series™ for your classic Chevy. All kits include power steering box ready to bolt to your frame, power steering pump, pitman arm, hose kit and rag joint.



New billet aluminum cap coming soon!

PART #	DESCRIPTION	RETAIL	JOBBER	DEALER
7887PSK	1978-87 G-body, with 500 Series™ box, kit	\$649.00	\$600.00	\$489.00

Classic Performance Products, Inc.

UNIVERSAL / OTHER CUSTOMS



NEW

TUBULAR ARMS FOR 1949-51 MERCURY

Now available as a bolt-in with no modification required, a tubular control arm set for 1949-51 Mercury fullsize cars. These eliminate stock king pin style spindles allowing the use of newer style braking, traditional front end alignment and much better handling and ride. They come complete with cross-shafts, ball joints and mounting hardware. Powder coated black ready to install. Allows the use of CPP Granada spindles and brakes.

PART #	DESCRIPTION	RETAIL	JOBBER	DEALER
M4951TCA-ULK-B	1949-51 Mercury, upper & lower, kit	\$799.00	\$719.00	\$599.00

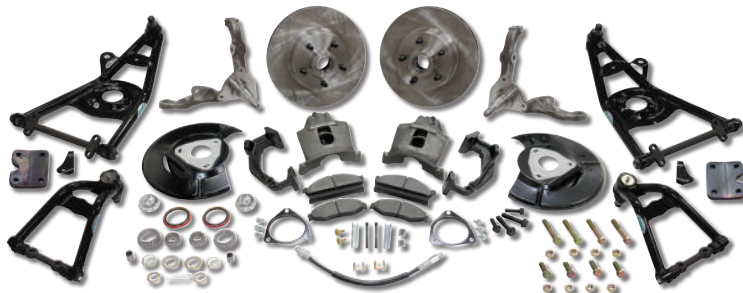
400Series™

POWER STEERING CONVERSION KIT FOR 1961-69 DODGE

This brand new 400 Series™ box adds power steering with a sporty 3-1/2 turns lock-to-lock making your old truck fun to drive again. Our box mounts in the same factory location as the original box making it a true bolt-in design. No fabrication. This kit includes the power steering box, column floor mount, pitman arm, and all the hardware you need making this a simple bolt-in conversion. *Note: Rag joint and Saginaw power steering hose kit sold separately.*



PART #	DESCRIPTION	RETAIL	JOBBER	DEALER
6169PSK-400D	1961-69 Dodge, kit	\$499.00	\$450.00	\$369.00
400UHK	Hose Kit, kit	\$75.00	\$66.00	\$55.00
6169RJC-730	Rag Joint, each	\$69.00	\$62.00	\$50.00



BRAKE AND SUSPENSION PACKAGE FOR 1949-51 MERCURY

NEW

CPP now offers a bolt-in brake and suspension package with no modifications required for 1949-51 Mercury cars. No more cutting and welding on your stock stamped control arms and no more having to adapt them for balljoints. This kit eliminates the stock king pin suspension; adapting a true ball joint conversion setup for the front of your car. Control arms come fully assembled with ball joints, cross shafts and are powdercoated black finish. The brake kit included is available 5 x 4.5" or 5 x 5.5" bolt patterns. *Note: This package may lower ride height by 1".*

PART #	DESCRIPTION	RETAIL	JOBBER	DEALER
M4951BSP-4.5	1949-51 Mercury, 5x4.5	\$1,299.00	\$1,119.00	\$999.00
M4951BSP-5.5	1949-51 Mercury, 5x5.5	\$1,449.00	\$1,149.00	\$1,029.00



OTHER GM BIG BRAKE WHEEL KITS FOR 1955-57 PONTIAC

CPP introduces its own line of front Big Brake kits. The front system uses a 13" cross-drilled, gas slotted and zinc washed rotor, mounted to a 2024 T6 billet aluminum CNC machined anodized hub and a PBR C15 caliper that attaches to the spindle with CPP custom caliper mounting brackets. PBR C15 calipers have twin 52mm pistons and a larger brake pad surface area that offers about 60% more stopping power in the caliper than the popular C5 caliper at half the cost. Big Brake kits require larger diameter disc brake type wheels: our 13" kit requires 17" wheels. (easy-to-use wheel template available).

PART #	DESCRIPTION	RETAIL	JOBBER	DEALER
5557WBK-13PON	1955-57 Pontiac, kit	\$799.00	\$703.00	\$599.00

LS CONVERSION COMPONENTS

NEW



#CPLS-EHR



#CPLS-EHC

LS CAST IRON EXHAUST MANIFOLDS

CPP introduces its LS Iron Exhaust manifolds with the car builder in mind. The tight-to-the-block design makes these fit a wide range of applications. The contoured design provides excellent performance on engines up to 500 horsepower. Includes gaskets and mating flanges.

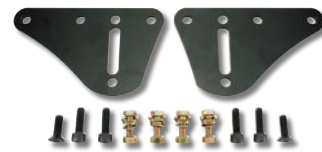
PART #	DESCRIPTION	RETAIL	JOBBER	DEALER
CPLS-EHR	Raw	\$225.00	\$203.00	\$169.00
CPLS-EHB	Black	\$250.00	\$225.00	\$188.00
CPLS-EHSCA	Silver Ceramic Coating	\$349.00	\$314.00	\$262.00
CPLS-EHC	Chrome	\$390.00	\$351.00	\$293.00
CPLS-EHBCA	Black Ceramic Coating	\$410.00	\$369.00	\$308.00



#LS1-KS



#LS1-K3



#LS1-K125



#LS1-KU-P

FIT Rite™

LSI ENGINE MOUNTS

CPP has all the combinations of LS engine brackets to get your motor into your project.

**LS
INSTALLATION
MADE EASY!**

PART #	DESCRIPTION	RETAIL	JOBBER	DEALER
LS1-KS	LS swap engine plates (stock location), kit	\$69.00	\$61.00	\$50.00
LS1-K3	LS swap engine plates (3" forward), kit	\$69.00	\$61.00	\$50.00
LS1-K125	LS swap engine plates (1.25" forward), kit	\$69.00	\$61.00	\$50.00
LS1-KU-P	FitRite™ LS swap engine plates (adjustable 1/2" rear - 3-1/2" forward) with POLYPLUS™ pad mounts, kit	\$129.00	\$117.00	\$97.00
LS1-KULAC-P	FitRite™ LS swap engine plates (adjustable 2-1/4" - 3-3/4" forward for low A/C compressor) with POLYPLUS™ pad mounts, kit	\$129.00	\$117.00	\$97.00



From left to right: (Top Row) Aaron Strietzel, Eduardo Gaytan, Victor Garcia, Victor Zendejas, Asael Lopez, (Bottom Row) Yusely Nuñez, Tarynn Kerr, Cathy White, Jennifer Matthews and Javier Nuñez

DEDICATED MAILBOX (AVAILABLE 24/7)
dealer@classicperform.com

DIRECT DEALER TEAM EXTENSION
1-800-522-5004 - ext. 608

Sales, Stock Check, Billing, Order Entry:

Cathy WhiteExt. 106
cathy@classicperform.com

Yusely NuñezExt. 127
yusely@classicperform.com

Jennifer Matthews Ext. 120
jenniferi@classicperform.com

Tarynn KerrExt. 122
tarynnk@classicperform.com

Product and Tech Support:

Aaron StrietzelExt. 125
aaron@classicperform.com

Javier NuñezExt. 130
javier@classicperform.com

Marketing:

Cathy WhiteExt. 106
cathy@classicperform.com

Vice President of Operations:

Victor ZendejasExt. 113

BE A PART OF OUR ONLINE MEDIA



Keep up with all the latest news and updates at CPP!

BUSINESS HOURS:

8:00am to 5:00pm Monday - Friday
8:00am to 1:30pm Saturday
Closed Sunday

